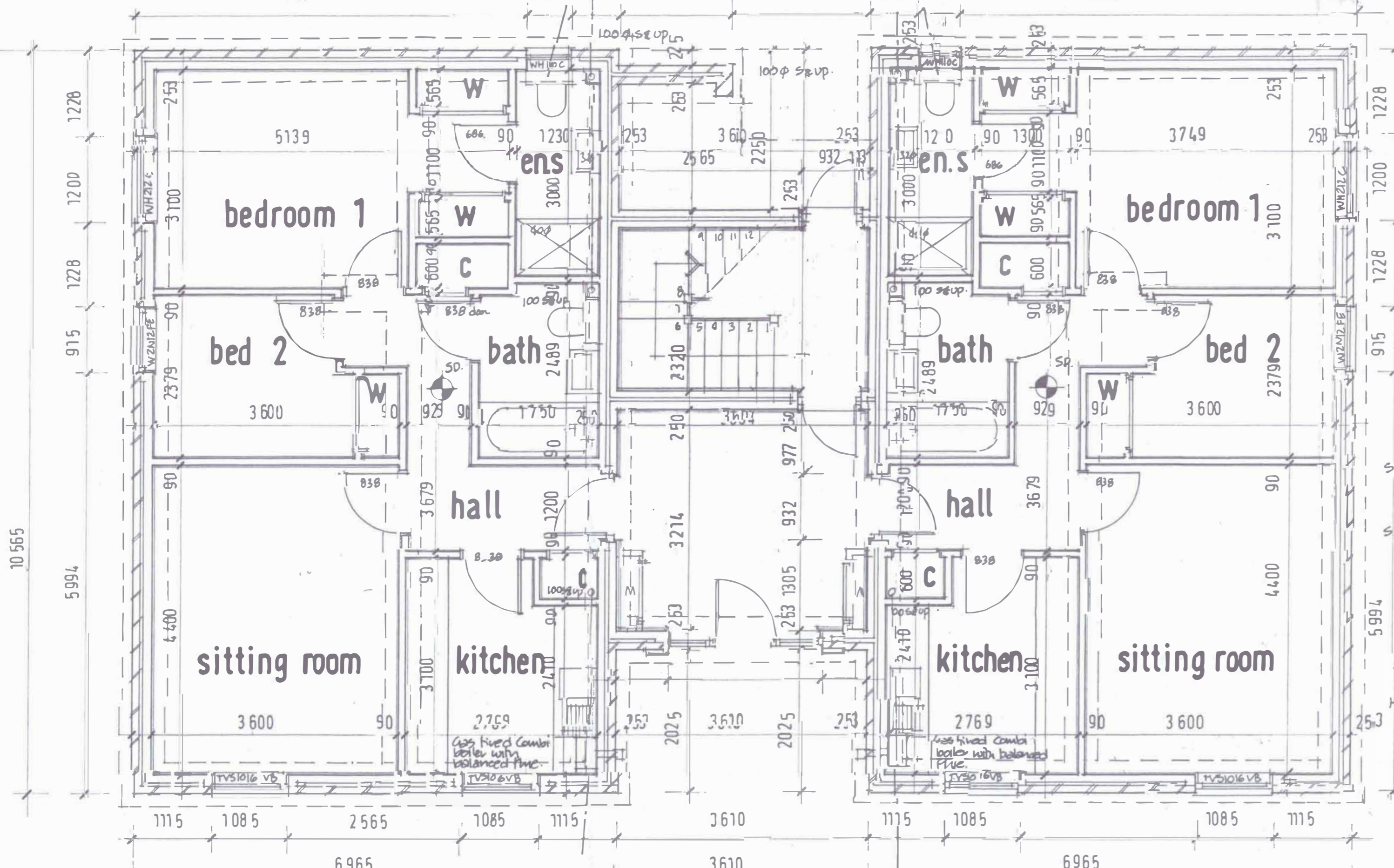


FIRST FLOOR

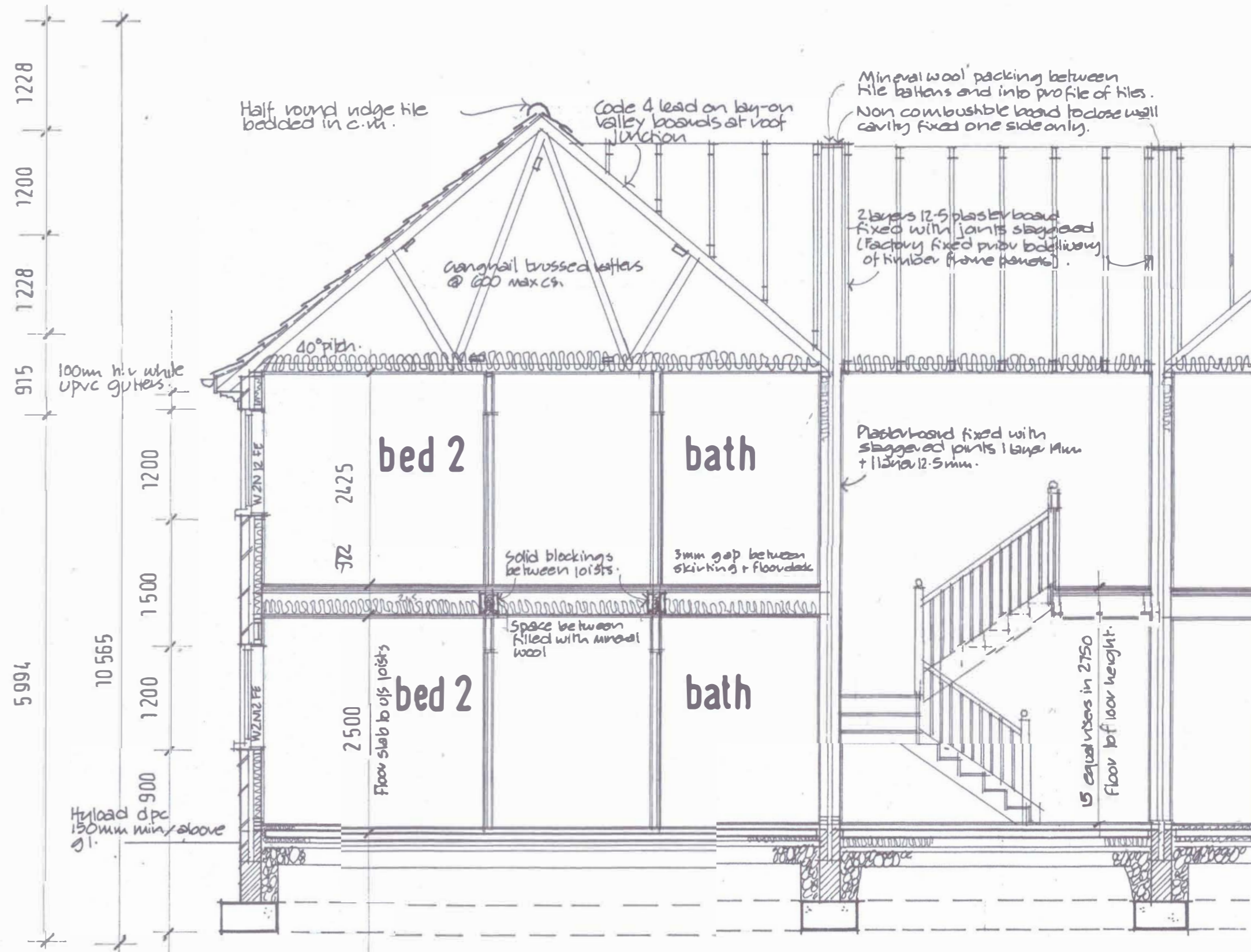
8



GROUND FLOOR

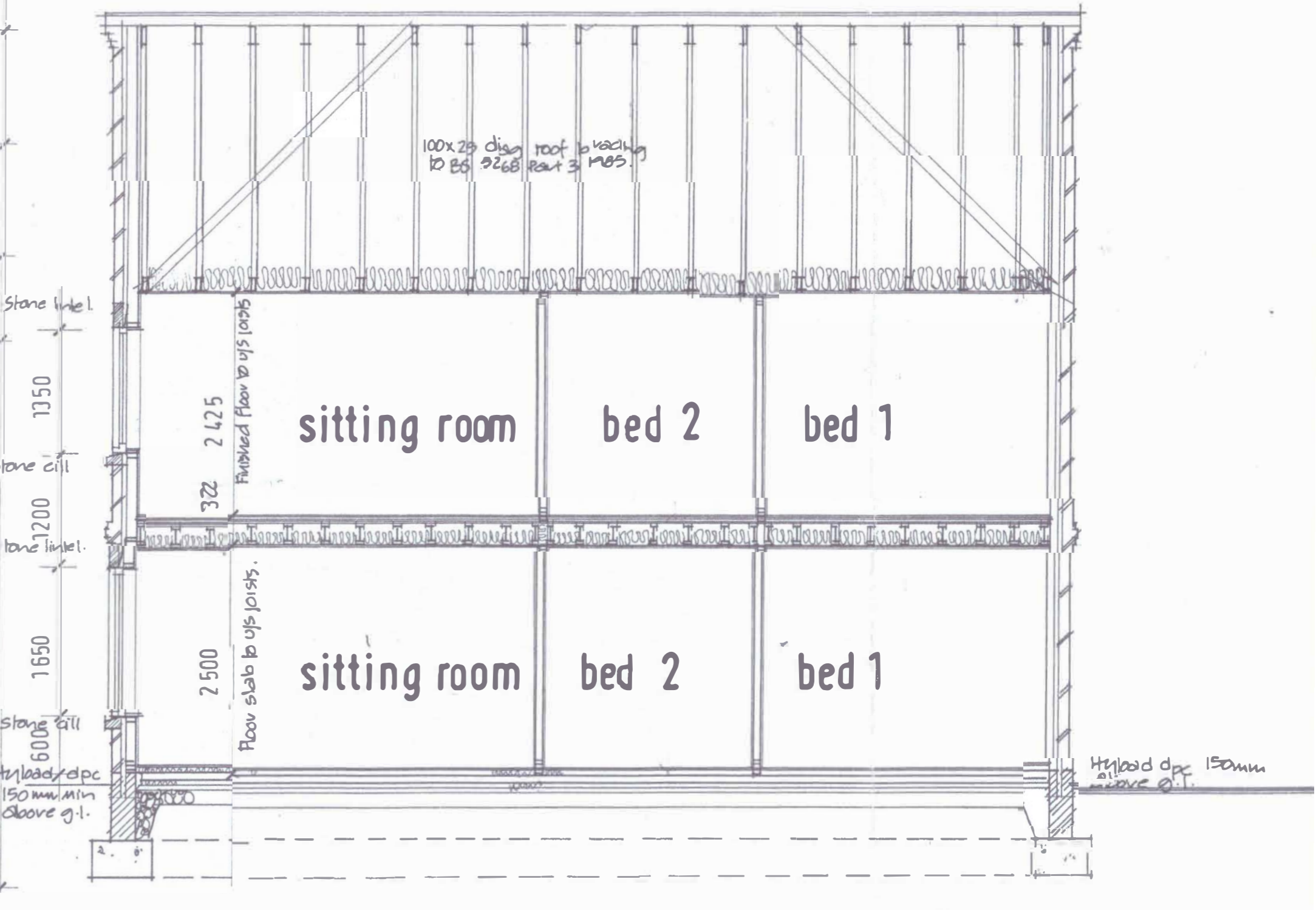
7

Floor area 64.91m² 700ft²



SECTION A-A

- M1 Conservation of fuel + power. At least two light fittings to be installed which will only take lamps having a luminous efficacy greater than 40 lumens per circuit watt. (Fluorescent or compact fluorescent lamp types but not GLS ring style lamps with bayonet cap or Edison screw bases).
- M2 All switches + sockets to be positioned between 400 and 1200 from finished floor level in all habitable rooms including kitchen.
- External lighting ditto and should extinguish when there is enough daylight.



SECTION B-B